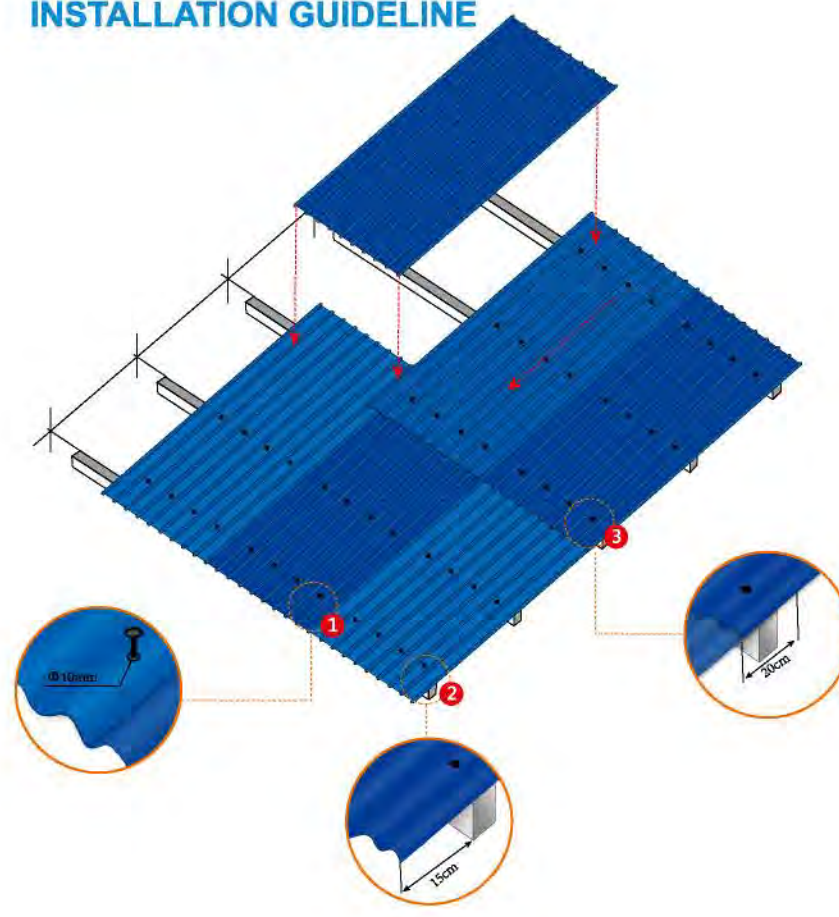
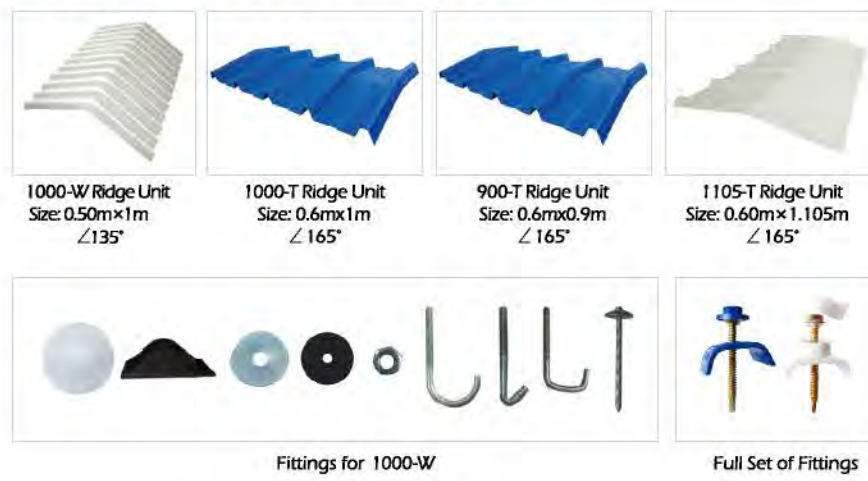


INSTALLATION GUIDELINE



- In order to allow normal linear heat expansion of the sheets, it is necessary to piece the sheet with a Ø10mm drill bit, then fasten the sheets with Ø 6mm fittings. We advise you not to use direct fixings without piercing the sheets with self perforating screws because doing so prevents any dilatation of the sheet. Do not use a hammer to put the screws in. Original fittings supplied by us must always be used.
- The overhang is 15cm from the bottom purline.
- The vertical overlap is at least 20cm, and fittings must be fixed on every peak of wave.
- Considering the safety problem, it is only allowed to walk on the purlins during installation and maintenance, while not walk directly on the roofing sheet.
- Installation work can not be processed when temperature below -5℃, or in rainy, snowy or heavy windy weather.

ACCESSORIES AND FITTINGS



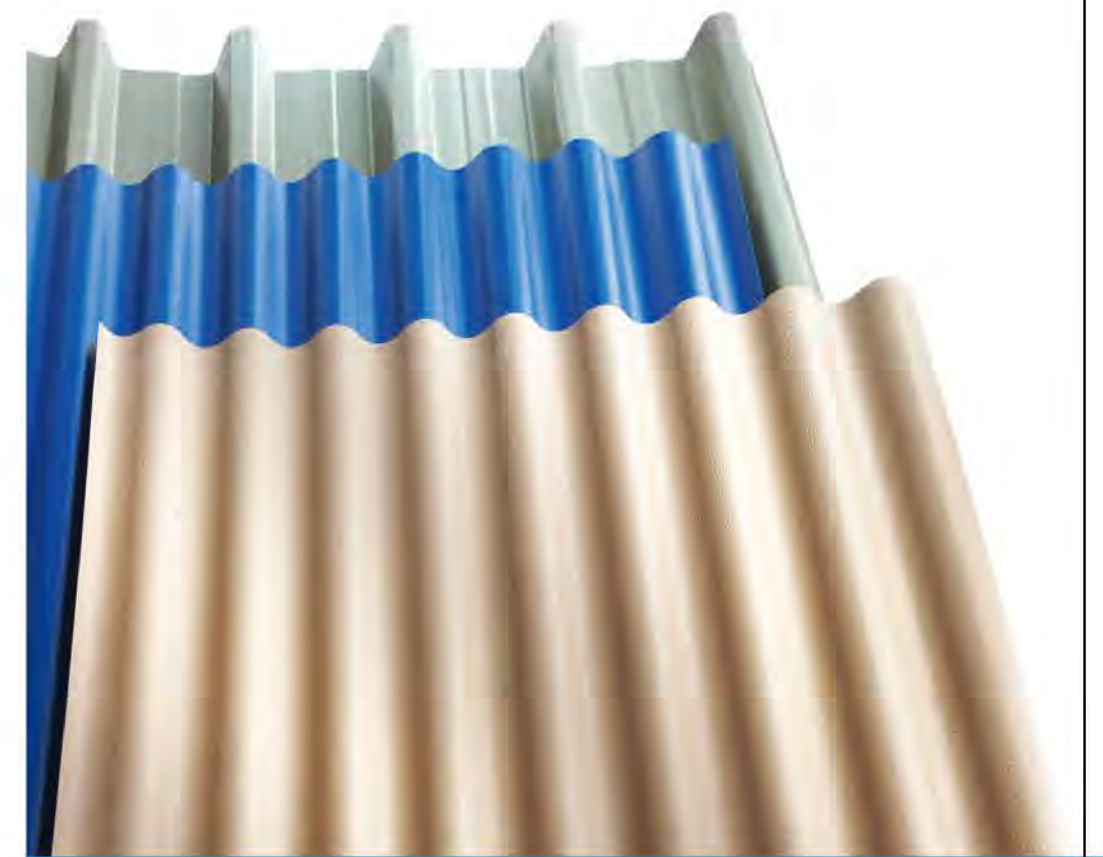
APPLICATIONS

- GELOY™ ASA roofing sheet & wall cladding can be applied to the following industries:
- Fertilizer
 - Mining
 - Porcelain
 - Papermaking
 - Printing&Dyeing
 - Food processing
 - Nonferrous metal
 - Brewing
 - Foundry
 - Cultivation
 - Electroplating
 - Chlor-alkali
 - Chemical
 - Textile
 - Salinization

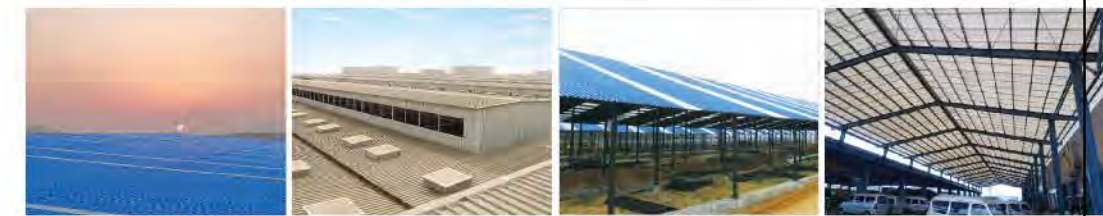
STANDARD COLORS



Shandong Fangxing Building Materials Co.,Ltd.
Address: 7150 Yuhai Road, Laizhou 261400, Shandong, China
Tel: 0086-532-85039204/05/85030055 Fax: 0086-532-85039203
E-mail: inquiry@fangxing.com
www.fangxingroofing.com



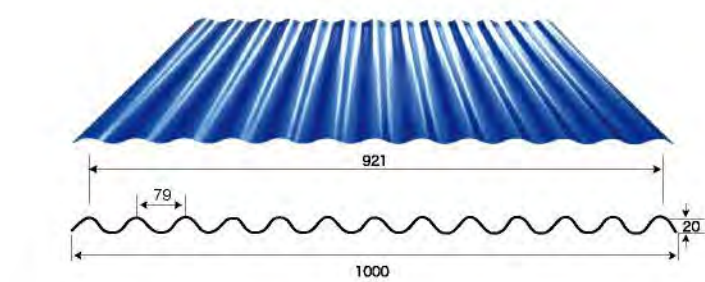
GELOY™ ASA ROOFING SHEET AND WALL CLADDING
Special For The Roofing And Wall Covering Of Industrial Building



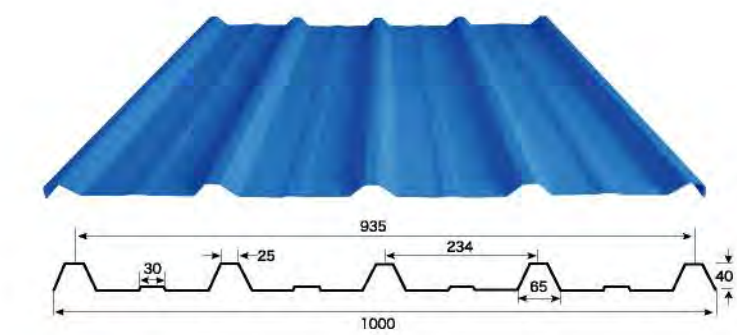
封底

封面

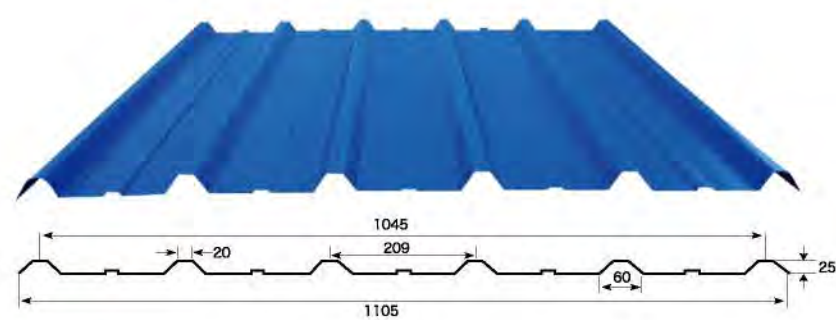
GELOY™ ASA ROOFING SHEET



1000-W
Width: 1000mm
Length: Customize
Purline Space: ≤800mm
Thickness: 1.5mm, 2.0mm★, 2.5mm★, 3.0mm



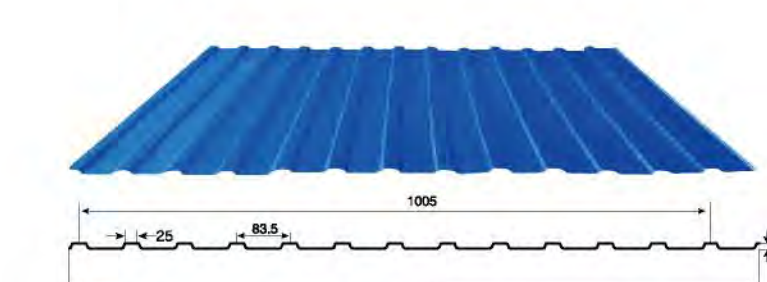
1000-T
Width: 1000mm
Length: Customize
Purline Space: ≤1200mm
Thickness: 2.0mm, 2.5mm★, 3.0mm★



1105-T
Width: 1105mm
Length: Customize
Purline Space: ≤800mm
Thickness: 1.5mm, 2.0mm★, 2.5mm★, 3.0mm

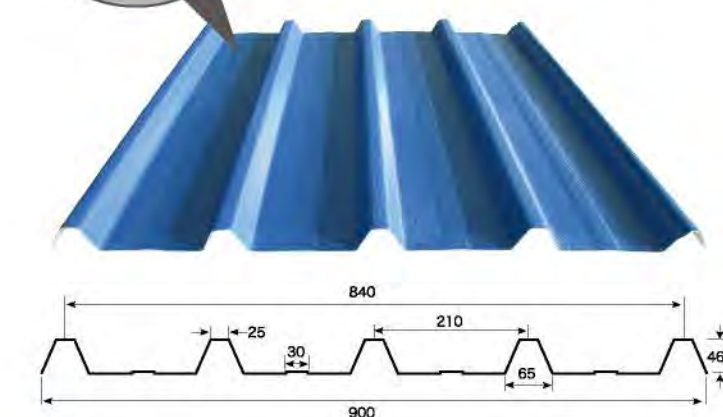
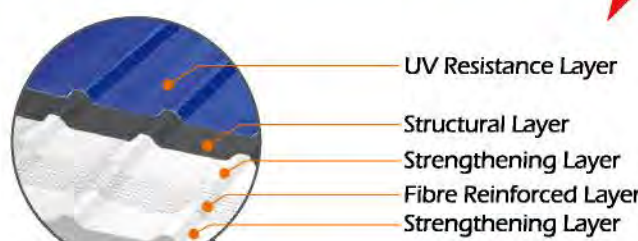
Remark: ★ means our star products

GELOY™ ASA WALL CLADDING



1100-T
Width: 1100mm
Length: Customize
Purline Space: ≤1200mm
Thickness: 1.5mm, 2.0mm★, 2.5mm★, 3.0mm

SUPER 5-LAYER ROOFING SHEET



900-T
Width: 900mm
Length: Customize
Purline Space: ≤1500mm
Thickness: 2.5mm

TECHNICAL FEATURES

FAST COLOR
The GELOY™ ASA roofing sheet & wall cladding is protected by ASA resin, and tests held in Aging Test Center of Arizona and Florida by GE prove that the color will preserve for more than 10 years in nature.

ANTI-CORROSION
The material of GELOY™ ASA roofing sheet & wall cladding is totally anti-corrosive, which can withstand most chemicals like acid, alkali and salt and industrial emissions. Therefore, GELOY™ ASA roofing sheet & wall cladding is specially suitable for coastal areas, animal confinement buildings and heavy chemical areas.

ACOUSTIC INSULATION
The physical properties of GELOY™ ASA roofing sheet & wall cladding have excellent acoustic insulation performance, which is 10-15% lower than metal sheets.

ELECTRIC INSULATION
The material of GELOY™ ASA roofing sheet & wall cladding does not conduct electricity.

RESISTANCE TO HIGH AND LOW TEMPERATURES
GELOY™ ASA roofing sheet & wall cladding carry out best functions within a wide range of temperatures: from -20° to +85°.

ANTI-LOAD
Tests by National Test Center of Polymer & Building Materials show that with purlin space of 1200mm roofing tiles have no breakage under 150kg loading pressure.

FIRE RESISTANCE AND SELF-EXTINGUISHING MATERIAL
Tests by National Test Center of Polymer & Building Materials prove that GELOY™ ASA roofing sheet & wall cladding is Class B1 material.

封2